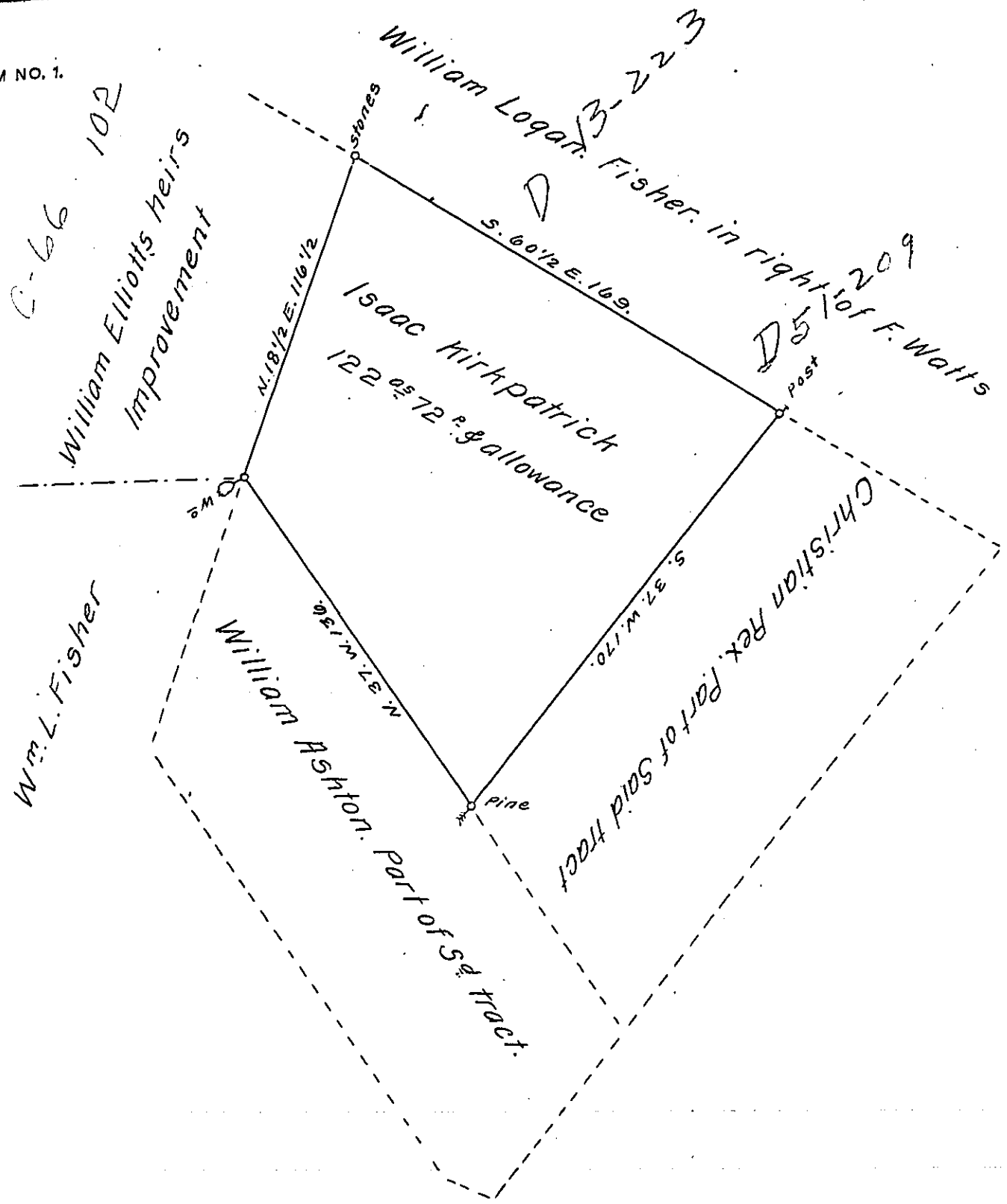


FORM NO. 1.



Draft of Land Situate in Wheatfield Township (Formerly Rye) Perry County. Containing One hundred and twenty two Acres. Seventy two perches and allowance of Six per Cent for roads &c. Part of 316<sup>a.s</sup> 133<sup>P.s</sup>. Originally Surveyed the 1<sup>st</sup> day of March 1708 on an Order granted to John M<sup>c</sup> Coy dated December 13<sup>th</sup> 1766. N<sup>o</sup> 2164. The above part Surveyed at the request of Isaac Kirkpatrick the owner (to patent) September the 25<sup>th</sup> 1840.

Pr. W<sup>m</sup> Wilson. D.S.

IN TESTIMONY that the above is a copy of the original remaining on file in the Department of Internal Affairs of Pennsylvania, made conformably to an Act of Assembly approved the 16th day of February, 1833, I have hereunto set my Hand and caused the Seal of said Department to be affixed at Harrisburg, this twenty first day of February 1912.

*Henry Hoover*  
Secretary of Internal Affairs.